

2 3 **An Indication** of Intentional Efforts to Cause Global 4 Warming and Glacier Melting

5 6 **ABSTRACT**

7
8 **Aims:** On or about February 14, 2016, an oily-ashy substance was accidentally released by an aircraft and
9 fell on seven residences and vehicles in Harrison Township, Michigan (USA). The aims of this
10 investigation are to analyze the “air-drop material” and from the results obtained to draw inferences as to
11 the intended purpose of the material.

12 **Methodology:** Inductively coupled plasma mass spectroscopy (ICP-MS) and scanning electron
13 microscopy (SEM) with energy dispersive X-ray (EDX) analysis were used to analyze the “air-drop
14 material.”

15 **Results:** The “air-drop material” was found to consist of an assemblage of plant material mixed with coal
16 fly ash and salt. The splatter pattern on vehicles, ground, and rooftops resembles cryoconite holes
17 observed on ablating glaciers worldwide. The “air-drop material” resembles to some extent natural
18 cryoconite, and appears to be modeled after that substance with coal fly ash imparting the dark gray color
19 that absorbs sunlight, melts glacial ice, and contributes to global warming.

20 **Conclusions:** The results of this investigation provide evidence that is **indicative** of a deliberate effort to
21 hasten the melting of glaciers and thereby hasten global warming. If so, this investigation reinforces **the**
22 **net effect of daily particulate aerosol spraying in the troposphere observed worldwide**. Elsewhere the
23 author has provided evidence that coal fly ash is the primary material being employed in such spraying
24 whose net effect is to enhance global warming. Scientists worldwide should call for, and indeed demand,
25 a full and open investigation into these covert geoengineering activities whose potential impacts on
26 Earth’s climate system, the integrity of Earth’s biota, and on human health may prove to be extremely
27 hazardous.

28
29 *Keywords: geoengineering, global warming, cryoconite, cryoconite holes, glacier melting, Harrison*
30 *Township*

31 32 33 **1. INTRODUCTION**

34
35 Life on Earth exists in a complex and fragile state of mutually-dependent dynamic equilibrium between
36 and among biota and the physical environment. Any perturbation of that equilibrium is apt to upset this
37 delicate balance with potentially devastating consequences for numerous species, including humans.

38 Since the beginning of the industrial age, humans have inadvertently and materially altered our
39 planet. Early on the effects were localized, as exemplified by the sooty and later smog conditions in cities
40 worldwide, and by regional deforestations around the globe. As we progressed technologically our
41 capability for environmental destruction kept growing [1]. In many cities the air is now unsafe to breathe,
42 plastic wastes choke our oceans, airliners pollute the atmosphere with combustion products from jet fuel
43 and its additives, land surfaces are increasingly paved over, forests continue to be eliminated, and
44 massive fossil fuel burning produces unnatural heat and exhaust gases. This list is not exhaustive.
45 Collectively, we humans have not yet learned to live in harmony with our planet.

46 In addition to these unintended assaults on our planet, there is an intentional one, referred to as
47 geoengineering, which is potentially more harmful than all other assaults. Geoengineering may be defined
48 as “the deliberate large-scale manipulation of the planetary environment including weather and climate
49 manipulation.” The basis for geoengineering stems from cloud seeding experiments in 1946-47. It was
50 discovered that adding dry ice (frozen CO₂) or silver iodide to clouds could aid in the nucleation of rain or

51 snow. Development of the technology to control weather for use as a weapon of war began with that
52 discovery [2,3] and has proceeded in secret ever since. From 1967 to 1972 Operation Popeye involved
53 cloud seeding with the intention of extending the monsoon season over the Ho Chi Minh Trail to impede
54 transport of troops and supplies during the Vietnam War [3,4]. But causing clouds to dump rain or snow
55 more-or-less at will was just the first step. The military wanted to fully control the weather as a weapon of
56 war, as was later described in the 1996 U.S. Air Force document: "Weather as a Force Multiplier: Owning
57 the Weather in 2025 [5]."

58 In retrospect that document should have been cause for alarm. Since the end of World War II, the
59 U.S. military has been single-minded in its scientific pursuits with no sense of responsibility for the
60 wellbeing of either civilian populations or the environment. For example, in pursuit of its nuclear warfare
61 technology, atmospheric detonations of more than one hundred nuclear devices were generally
62 undertaken without regard for the health of unsuspecting residents downwind [6]; without regard for the
63 environment, as evidenced by exploding a fission bomb in the Van Allen belt; and, on a more personal
64 scale by telling pregnant women they were receiving vitamins when instead they were being given
65 radioactive iron; or by injecting newborn infants with radioactive iodine-131 [6-9].

66 After learning how to make clouds produce rain or snow more-or-less on demand, the next
67 technological step was to learn how to inhibit rainfall to bring drought and starvation to a perceived enemy
68 nation. For at least thirty years experiments were conducted in the lower atmosphere (troposphere) that
69 involved jets spraying undisclosed substances which left particulate trails across the sky [10] that were
70 witnessed by millions (Figure 1). These trails at first superficially resemble contrails, which are ice crystals
71 formed from aircraft exhaust. Contrails are formed, however, only in very humid environments, with
72 temperatures low enough to sustain the saturation vapor pressure with respect to ice, and with sufficient
73 moisture content in the exhaust gases [11,12]. Contrails rapidly become invisible by evaporation whereas
74 particulate trails spread out to sometimes briefly form artificial cirrus-like clouds before further spreading
75 to form a white haze in the sky.



76
77

78 **Figure 1.** Photographs of geoengineering particulate matter emplaced in the troposphere above the
 79 United States of America, France, England and Egypt. Typically, particulate trails laid by tanker jets soon
 80 diffuse, becoming artificial clouds, which further diffuse into a white haze in the sky, sometimes so heavy
 81 that the sky appears overcast, sometimes with a brownish hue. Photos courtesy of Patrick Roddie and
 82 Deborah Whitman. Egypt photo by the author.

83

84

85 The principle involved in inhibiting rain is simple and is well known from pollution studies. Micron
 86 and sub-micron particulate-pollution matter, when sprayed into a region where clouds form, keeps

87 moisture droplets from coalescing to form drops sufficiently heavy to fall as rain or snow. Eventually, the
88 moisture laden clouds must release their aqueous burden potentially causing storms and downpours. The
89 military and covert-activity implications are clear: Spray particulate matter into the air above a perceived
90 enemy, destroy the agricultural economy, decimate livestock and cause hardship and starvation [13].

91 If tropospheric particulate spraying activities were solely for developing that military technology,
92 the experiments would be limited temporally and geographically. But that is not what has been observed
93 by millions of individuals throughout the world [14-19]. In the last several years tropospheric particulate-
94 matter spraying has become a near-daily activity over much of the world without official acknowledgement
95 and without informed consent of those who breathe air that is contaminated with these tiny particles.
96 Clearly, this is a secret program that is undertaken by diverse nations, including, but not limited to, the
97 United States, Canada and other British Commonwealth nations, European Union countries, Japan,
98 Russia, Brazil, South Korea, Egypt, and India. No official information is available to the public as to what
99 governments/organizations are leading this aerial assault on our planet, its purpose, the substances
100 being sprayed into the troposphere, the geophysical implications, or the public and environmental health
101 consequences. In principle the geoscience community has the instrumentation and understanding to
102 ascertain answers to some of these questions. Instead, academic scientists collectively have turned a
103 blind eye, remaining silent or chanting the United Nations' Intergovernmental Panel on Climate Change
104 (IPCC) mantra that at some time in the future it may be necessary to put solar-blocking substances high
105 into the stratosphere to counteract assumed global warming. Recently, a once prestigious scientific
106 journal became party to deliberately deceiving the public about this aerial spraying [20].

107 I hold that scientists, because of their abilities and training, have the responsibility to benefit
108 mankind and advance civilization [21]. I therefore chose to apply scientific methods to ascertain the
109 nature of the main substance being sprayed into the troposphere [13,22,23] and discovered three
110 independent lines of evidence that the tropospheric geoengineering particulate-pollution consists mainly
111 of coal combustion fly ash. When coal is burned by electric-power utilities, the heavy ash settles and the
112 "fly ash" goes up the smokestacks where in Western nations it is electrostatically trapped and
113 sequestered as this ash-portion contains most of the toxic heavy metals that were incorporated in the
114 coal. When sprayed into the troposphere, coal fly ash inhibits rain/snow fall, absorbs atmospheric
115 moisture, enhances the electrical conductivity of atmospheric moisture, warms the atmosphere, and
116 blocks radiation from the surface into space. When the coal fly ash with its typically dark gray color settles
117 to Earth, it absorbs sunlight and changes the albedo of snow and ice which aids in its melting. In other
118 words, in addition to causing drought, when sprayed into the troposphere on a near-global, near-daily
119 basis as at present, the aerosolized coal fly ash warms the planet, causing deliberate anthropogenic
120 global warming of a different type than caused by greenhouse gases.

121 Jet aircraft that spray coal fly ash into the troposphere are part of a near-global covert program
122 and operate from undisclosed airbases. On or about February 14, 2016, an aircraft presumably operating
123 out of Selfridge Air National Guard Base in Michigan (USA) momentarily released a small portion of its
124 payload which reportedly fell on residential properties in Harrison Township, Michigan (USA). On
125 February 14, 2016, a resident of Harrison Township noticed a strange substance that had apparently
126 fallen from a passing aircraft and that had landed on at least seven homes and several vehicles (Figure
127 2). "It was an ash type of substance with a little bit of an oily consistency to it," Harrison Township Fire
128 Department Chief Michael Lopez told ABC News [24]. "It appears to have fallen straight down," he added,
129 noting that the substance was only found on the roofs of cars and homes, and not splattered across the
130 sides.

131 Suspecting that this was an accidental release from a covert geoengineering activity, I obtained
132 samples of the material from one of the residents whose property was splattered from above (Figure 2)
133 and had the material analyzed. The material was also sampled and analyzed by officials from the
134 Michigan Department of Environmental Quality. Here I report the results of those analyses, which provide
135 evidence of a deliberate operation to melt ice and snow, which is consistent with the hypothesis that
136 aerosolized coal fly ash is being used to deliberately enhance global warming [13,22,23].



138
139
140
141
142
143
144
145
146
147
148
149

Figure 2 Splatter pattern of air-drop material evident on vehicles and residences.

2. METHODOLOGY

Samples of the “air-drop material” were collected by Harrison Township, Michigan (USA) resident Paul Schlutow on his property. He generously donated sample material to the author for analyses. Aliquots of the material were sent to Northern Lake Service, Inc.’s Analytical Laboratory and Environmental Services and to Basic Laboratory, Inc. for Inductively Coupled Plasma Mass Spectroscopy (ICP-MS) Analyses. An aliquot was sent to RJ Lee Group, Inc. for scanning electron microscopy (SEM) with energy dispersive X-ray (EDX) analysis.

150
151
152
153
154
155

3. RESULTS AND DISCUSSION

Figure 3 shows low magnification images of the air-drop material which the Michigan Department of Environmental Quality noted from microscopic examination “... consists of a mixture of particles in dark clumps ... that morphologically resembles plant material, including leaves, seeds and fruit skins make up the majority of the sample....” Clearly, the air-drop material is not mainly coal combustion fly ash, but, as

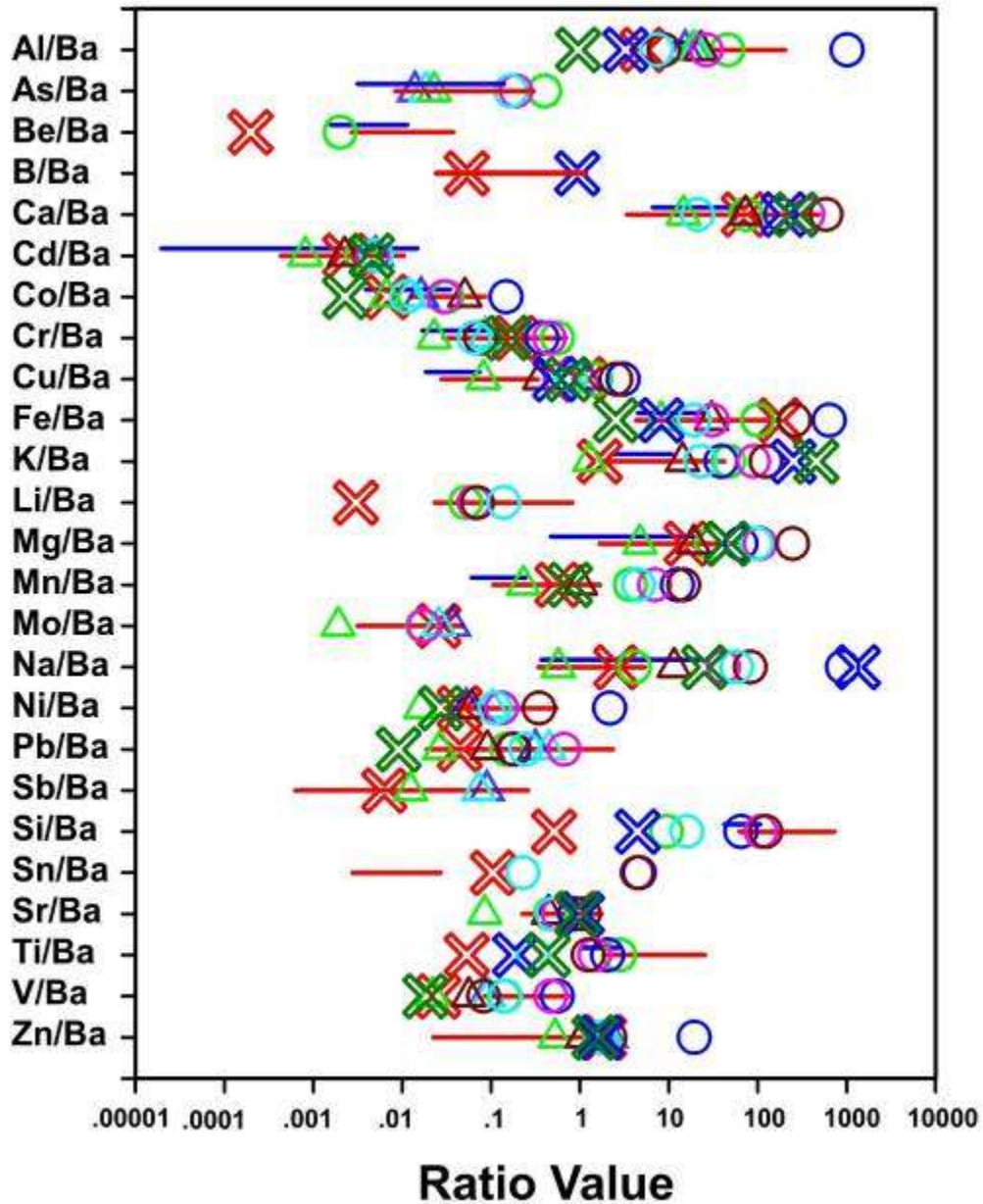
156 evidence indicates, coal fly ash is a commonly used geoenvironmental material. When coal fly ash falls to
157 Earth, its typically dark gray color absorbs sunlight and enhances global warming. So the question
158 naturally arose as to whether dark gray colored air-drop material contains coal fly ash. To answer this
159 question three samples of air-drop material were analyzed independently by ICP-MS, including one
160 sample of which was collected and analyzed by the Michigan Department of Environmental Quality. The
161 ICP-MS data, expressed as elemental mass ratios, are compared in Figure 4 to corresponding mass
162 ratios for the ranges of published coal fly ash analyses of 23 European coal fly ash samples [25] and 12
163 American coal fly ash samples [26]. For further comparison, ICP-MS ratio data also are shown for four
164 samples of dust collected on high-efficiency air filters operated outdoors for three months in California
165 (USA) and Arizona (USA) in places far removed from industrial coal-burning facilities [13,23]. ICP-MS
166 data, expressed as mass ratios, are also shown for five fiber samples collected in Laona, Wisconsin
167 (USA) on grass after snow had melted (Figure 5). White fibrous material, sometimes observed falling to
168 Earth during tropospheric aerosol spraying or found afterward [27-30] is believed to be an unintended by-
169 product formed when the coal fly ash feed-material with its additives encounters the jet combustion
170 environment where melting and elongation occur.

171
172



173
174
175
176

Figure 3 Low magnification images of air-drop material.



178
 179 **Figure 4** Element-ratios determined for air-drop material samples are indicated by X's: Green by the
 180 Michigan Department of Environmental Quality, red by Northern Lake Service, and blue by Basic
 181 Laboratory. For comparison: Red lines and blue lines, respectively, are the measured element-ratio
 182 ranges of European [25] and American [26] coal fly ash samples, circles are element-ratios of samples of
 183 fibers (Figure 5) found on grass as snow melted in Laona, Wisconsin (USA) on March 19, 2015, and
 184 triangles are element-ratios determined on dust collected on high-efficiency air filters operated outdoors
 185 for three month periods [13,23].
 186



187
188

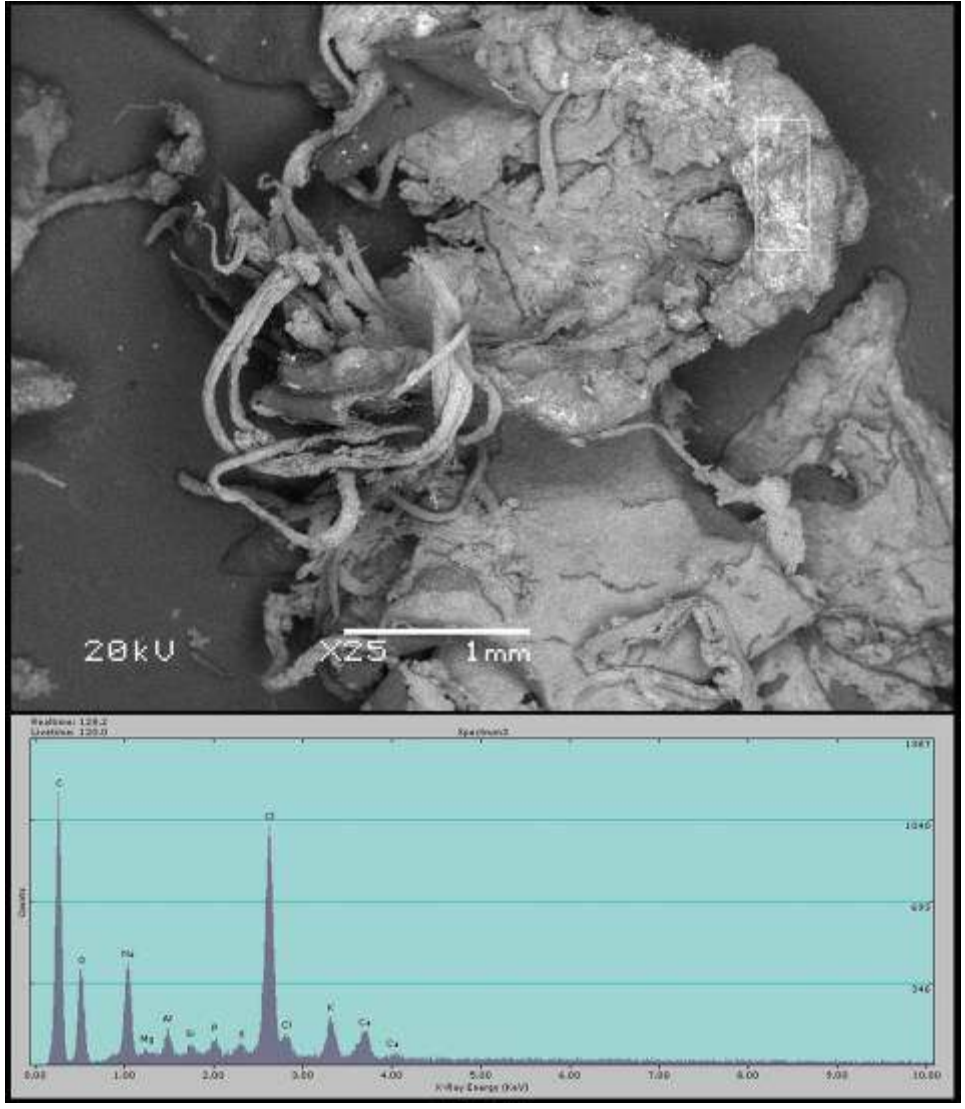
189 **Figure 5** Fibers believed to be formed during tropospheric geoengineering. Upper: Fibers observed on
190 grass as snow melted and sampled for analyses (photo courtesy of Robert West). Lower: Typical
191 presentation of fibers, in this case caught on farm equipment in the village of Argujillo in the Castilla –
192 León region of Spain (photo courtesy of Guardacielos – Skyguards).

193

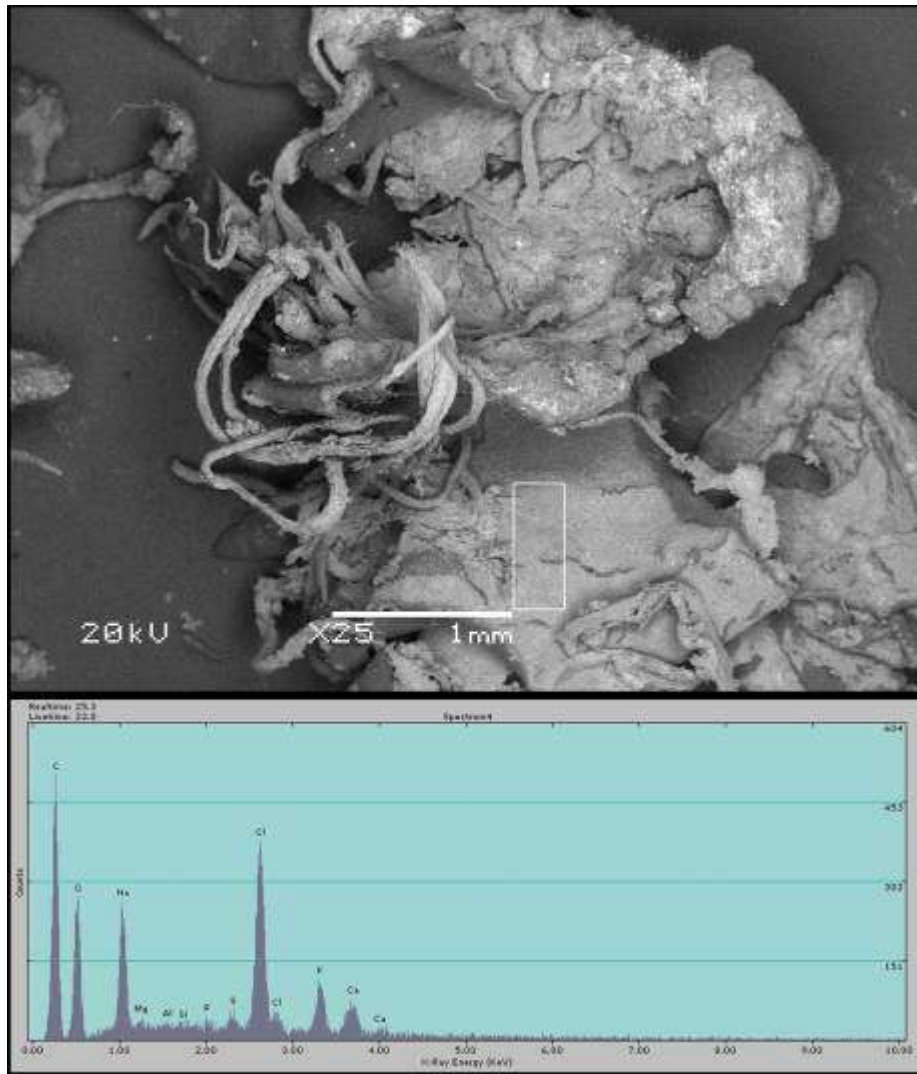
194 Nothing should be inferred from the observation in Figure 4 that not all ratios are shown for each
195 measured sample; that is primarily the consequence of different requested analyses, and secondarily the
196 result of different detection limits of the laboratories involved. Among the results shown there is variation,

197 but that is to be expected. Elemental variations are expected as coal from different sources incorporates
198 different relative amounts of trace elements. Elemental variations in coal fly ash may also arise from
199 different coal-burner dynamics. Further, elemental variations, at least in the fiber data, may arise from the
200 unintended fiber production mechanism. Statistical treatment of the measured ratio comparisons is not
201 appropriate as the comparison is not being made to one single related data population, but to a group of
202 independent sets of potentially variable populations. Nevertheless, the preponderance of agreements
203 over a large number of element ratios is strong evidence that coal fly ash is a component of the air-drop
204 material as well as of the filter-dust and fibers.

205 Figures 6-8 are scanning electron microscope (SEM) images of a sample of air-drop material.
206 The white rectangle shown on each image calls out the area where the EDX spectrum was determined.
207 The numerical values of the measured elements are collected in Table 1.

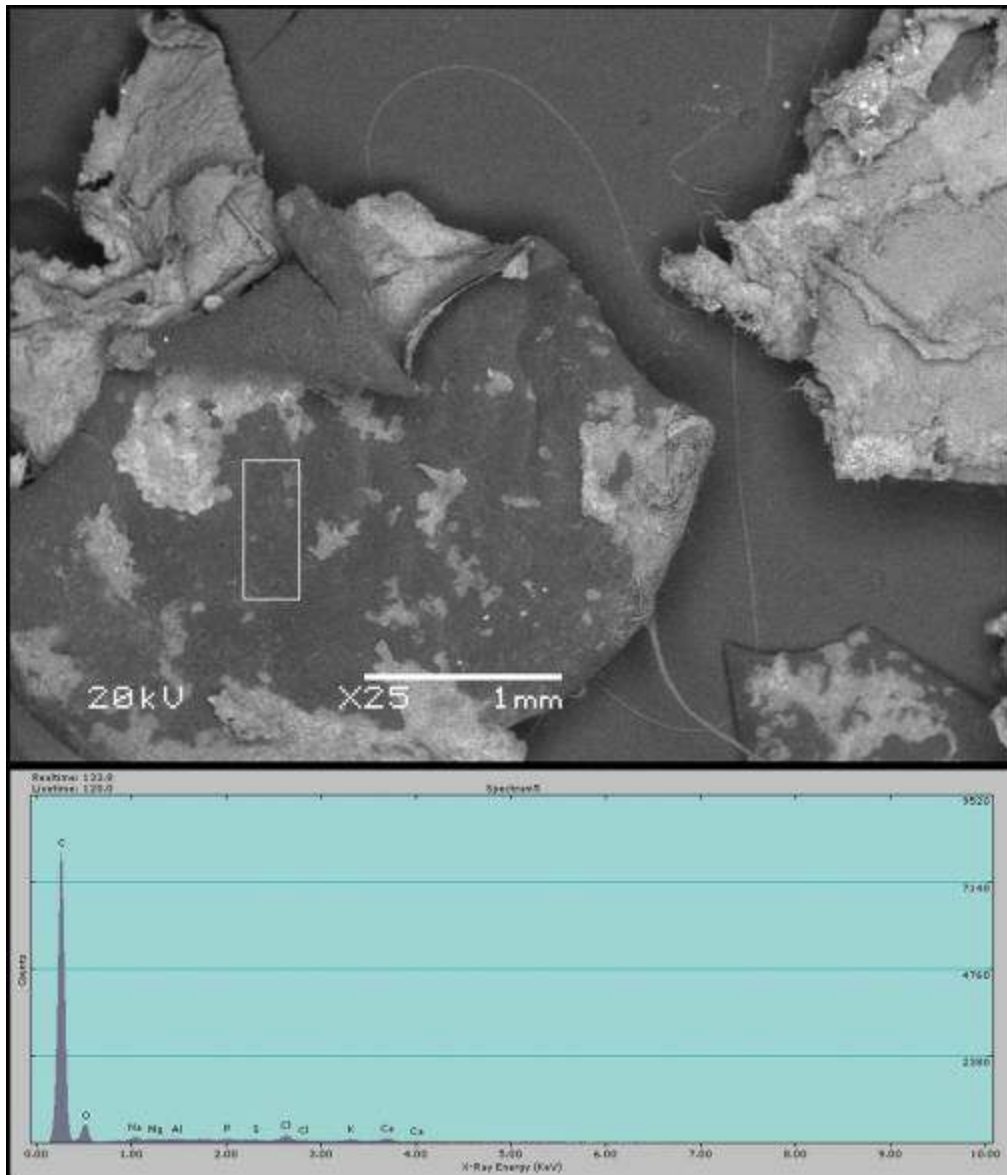


208
209 **Figure 6.** SEM photograph of a sample of air-drop material. The white rectangle calls out the area where
210 the EDX spectrum was determined. Numerical EDX values are collected in Table 1.
211
212



213
 214
 215
 216
 217
 218
 219
 220
 221

Figure 7. SEM photograph of the same sample of air-drop material shown in Figure 6. The white rectangle calls out a different area where the EDX spectrum was determined. Numerical EDX values are collected in Table 1.



222
 223
 224
 225
 226
 227
 228
 229
 230
 231
 232
 233
 234
 235
 236
 237

Figure 8. SEM photograph of a different sample of air-drop material. The white rectangle calls out the area where the EDX spectrum was determined. Numerical EDX values are collected in Table 1.

238
239

Table 1. Collected EDX elemental composition for the areas selected in Figures 6-8.

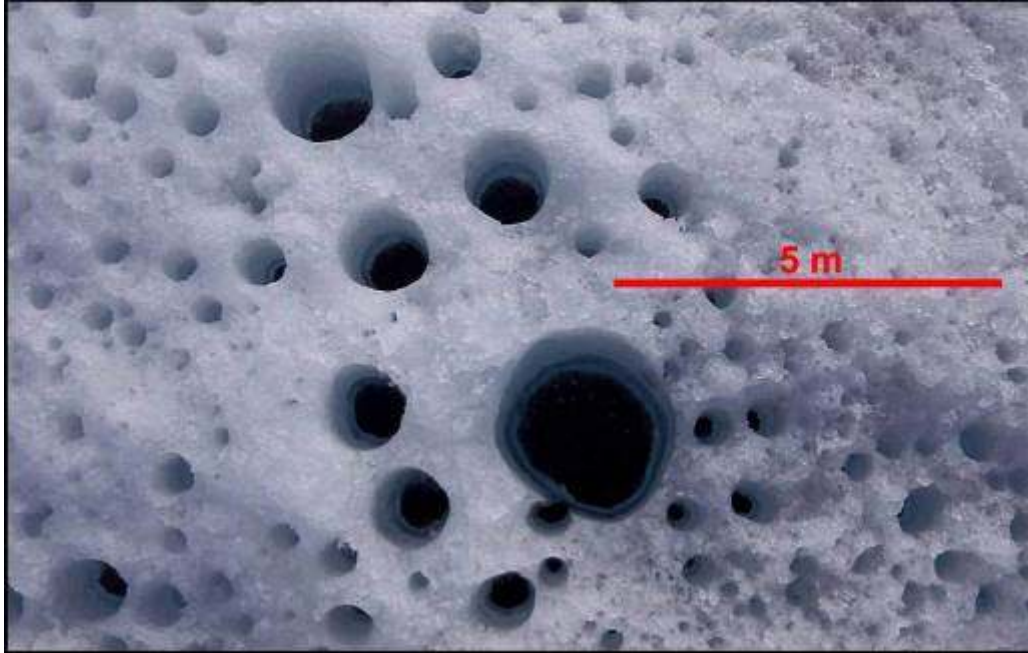
Element	Figure 4		Figure 5		Figure 6	
	wt. %	atom %	wt. %	atom %	wt. %	atom %
C	52.21	67.02	46.83	60.53	91.68	94.22
O	19.64	18.93	26.08	25.31	6.64	5.12
Na	7.85	5.27	9.93	6.71	0.40	0.22
Mg	0.11	0.07	0.58	0.37	0.04	0.02
Al	0.69	0.39	0.00	0.00	0.01	0.00
Si	0.08	0.05	0.17	0.10	0.03	0.01
P	0.56	0.28	0.06	0.03	0.09	0.03
S	0.48	0.23	0.75	0.36	0.01	0.00
Cl	13.26	5.77	10.24	4.48	0.51	0.18
K	2.87	1.13	3.17	1.26	0.22	0.07
Ca	2.25	0.87	2.19	0.85	0.38	0.12
Total	100.00		100.00		100.00	

240
241
242
243
244
245
246
247
248
249
250
251
252
253
254
255
256
257
258
259
260
261
262
263
264
265

From inspection of the data shown in Figures 6-8 and Table 1, it is clear that the air-drop material consists of processed plant material with the addition of some coal fly ash and some salt, which is indicated by the sodium and chlorine values shown in Table 1. Regrettably, no attempts were made to ascertain the nature of the oily binder originally observed on freshly fallen samples or to determine whether there were initially any viable living organisms present. Within the context of the data presented here, and the observed distribution pattern of air-drop material (Figure 2), what is the purpose of the air-drop material that was accidentally released over Harrison Township on or about February 14, 2016?

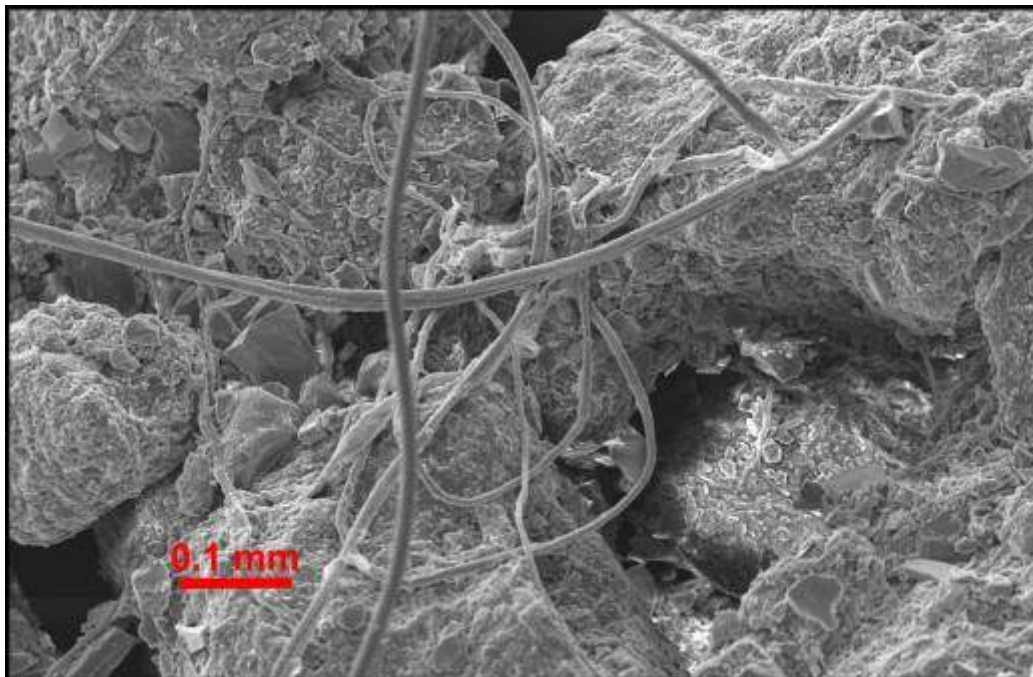
Patterns of quasi-circular holes, sometimes called “cryoconite holes” are observed on ablating glacier surfaces worldwide (Figure 9); these holes resemble the distribution pattern of the air-drop material shown in Figure 2. According to Cook et al. [31], “Cryoconite is granular sediment found on glacier surfaces comprising both mineral and biological material. Due to its dark colour, cryoconite efficiently absorbs solar radiation and ‘drills’ quasi-circular holes up to tens of centimetres deep into glacier ice surface.” Figure 10 is a SEM image of cryoconite. Despite its being ten times higher in magnification, the Figure 10 cryoconite image resembles the air-drop material SEM image shown in Figure 6. The air-drop material, I posit, is synthetic cryoconite, or proto-cryoconite, whose purpose is to melt glacial ice. That explanation is consistent with the now near-daily, near-global spraying of a particulate substance, evidenced as coal fly ash, into the troposphere which has the effect of causing global warming.

One can reasonably infer that the apparently accidental, momentary release of the air-drop material over Harrison Township is not a unique instance unto itself, but is indicative of part of a much larger systematic effort to melt glacial ice. Considerable time, effort and expense were required to develop the air-drop material that I refer to as synthetic cryoconite, or proto-cryoconite. Likewise, considerable time, effort and expense were required to develop and test the aircraft mechanism that disperses the material in a systematic and effective manner.



266
267
268
269
270
271

Figure 9 Cryoconite holes on the Greenland ice sheet (photo courtesy of Joseph Cook).



272
273
274
275
276
277
278

Figure 10 SEM image of cryoconite from the Greenland Ice Sheet showing a network of cyanobacterial filaments binding mineral fragments (photo courtesy of Joseph Cook).

For at least fifteen years covert weather/climate modification activities have been taking place with ever-increasing scale and frequency that involve spraying pollutant particles into the troposphere.

279 The scientific community has been grossly remiss in ignoring the now near-daily, near-global spraying of
280 particulate-pollution matter into the troposphere which evidence indicates is coal fly ash, a substance
281 containing toxins injurious to virtually all biota, including humans. Not only does the spraying contaminate
282 the environment, but the aerial placement of this particulate-pollution causes global warming and alters
283 weather patterns which can cause damage or injury to human health and even loss of life, disrupt food
284 production, and create a pestilent-ridden unhealthy environment on a global scale. Yet the consequences
285 of this near-global weather/climate modification geoengineering activity have not been taken into account
286 by any of the climate change models evaluated by the United Nations' Intergovernmental Panel on
287 Climate Change (IPCC), a fact that calls into question not only the findings of that organization, but its
288 moral authority as well.

289 Based upon the evidence presented here, I posit, there is another covert geoengineering activity
290 being practiced whose purpose appears to be to further enhance global warming by melting glacial ice.
291 The coal fly ash component of the air-drop material further pollutes the environment with toxic heavy
292 metals.

293 **4. CONCLUSIONS**

296 The results of this investigation provide evidence that is indicative of a deliberate effort to hasten the
297 melting of glaciers, and thereby hasten global warming. Considerable time, effort and expense was
298 required to develop the air-drop material, that I refer to as synthetic cryoconite, or proto-cryoconite, and to
299 develop and test the technology to disperse that material from the air in a systematic and effective
300 manner; consequently, it seems unlikely that this was simply a local operation. If so, this investigation
301 reinforces the presumed intent of daily aerosol particulate spraying in the troposphere, observed
302 worldwide, which has the consequence of causing global warming. Elsewhere the author has provided
303 evidence that coal fly ash is the primary material being employed in such spraying whose net effect is to
304 enhance global warming. Interestingly, one component of the air-drop material, inferred here from
305 analytical results, is coal fly ash. Scientists who study glaciers should be mindful of the evidence
306 presented here, and should look for instances where such matter, referred to as synthetic cryoconite, or
307 proto-cryoconite, might have been dropped.

308 Scientists worldwide should call for, and indeed demand, a full and open investigation into these
309 covert geoengineering activities whose potential impacts on Earth's climate system, the integrity of
310 Earth's biota, and on human health may prove to be extremely hazardous.

311 **CONSENT NOT APPLICABLE**

315 **ETHICAL APPROVAL NOT APPLICABLE**

317 **REFERENCES**

- 319 1. McNeill, J.R. *Something new under the sun: An environmental history of the twentieth-century*
320 *world*. W, W, Norton: New York, **2000**.
- 321 2. Bertell, R. *Planet earth, the latest weapon of war: A critical study into the military and the*
322 *environment*. The Women's Press: London, **2000**.
- 323 3. Fleming, J.R. *Fixing the sky: The checkered history of weathe and climate control*. Columbia
324 University Press: New York, **2010**.
- 325 4. NYTNS. Rainmaking used as weapon of war in se asia. *Daytona Beach Morning Journal* May 19,
326 **1974**.
- 327 5. House, T.J.; Near, J.B.; Shields, W.B.; Celentano, R.J.; Husband, D.M.; Mercer, A.E.; Pugh, J.E.
328 Weather as a force multiplier: Owning the weather in 2025. *US Air Force* **1996**.
- 329 6. Goliszek, A. *In the name of science: A history of secret programs, medical research, and human*
330 *experimentation*. St. Martin's Press: New York, **2003**.

- 331 7. Cole, L.A. *Clouds of secrecy: The army's germ warfare tests over populated areas*. Rowman &
332 Littlefield Publishers, Inc.: Oxford, **1988**.
- 333 8. Hornblum, A.M.; Newman, J.L.; Dober, G.J. *Against their will: The secret history of medical*
334 *experimentation on children in cold war america* Palgrave Macmillan: New York, **2013**.
- 335 9. Loue, S. *Textbook of research ethics: Theory and practice*. Springer: US, **2000**.
- 336 10. Thomas, W. *Chemtrails confirmed*. Bridger House Publishers: Carson City, Nevada (USA), **2004**.
- 337 11. Jiusto, J.E. *Prediction of aircraft condensation trails, project contrails*; Cornell Aeronautical
338 Laboratory Report No. VC-1055-P-5: **1961**; p 26.
- 339 12. Schumann, U. On conditions for contrail formation from aircraft exhausts. *Meteorologisch*
340 *Zeitschrift* **1996**, N.F.5, 4-23.
- 341 13. Herndon, J.M. Adverse agricultural consequences of weather modification. *AGRIVITA Journal of*
342 *agricultural science* **2016**, *38*, 213-221.
- 343 14. <http://globalskywatch.com> Accessed December 27, 2016.
- 344 15. <http://www.Cielvoile.Fr> Accessed December 27, 2016.
- 345 16. <http://www.Geoengineeringwatch.org> Accessed December 27, 2016.
- 346 17. <http://socalskywatch.net> Accessed December 27, 2016.
- 347 18. <http://www.Tankerenemy.com> Accessed December 27, 2016.
- 348 19. <http://www.Guardacielos.org> Accessed December 27, 2016.
- 349 20. Shearer, C.; West, M.; Caldeira, K.; Davis, S.J. Quantifying expert consensus against the existence
350 of a secret large-scale atmospheric spraying program. *Environ. Res. Lett.* **2016**, *084011*.
- 351 21. Herndon, J.M. Some reflections on science and discovery. *Curr. Sci.* **2015**, *108*, 1967-1968.
- 352 22. Herndon, J.M. Aluminum poisoning of humanity and earth's biota by clandestine geoengineering
353 activity: Implications for india. *Curr. Sci.* **2015**, *108*, 2173-2177.
- 354 23. Herndon, J.M. Obtaining evidence of coal fly ash content in weather modification
355 (geoengineering) through analyses of post-aerosol spraying rainwater and solid substances. *Ind.*
356 *J. Sci. Res. and Tech.* **2016**, *4*, 30-36.
- 357 24. [http://abcnews.go.com/US/mysterious-oily-substance-coats-homes-michigan-](http://abcnews.go.com/US/mysterious-oily-substance-coats-homes-michigan-neighborhood/story?id=37004318)
358 [neighborhood/story?id=37004318](http://abcnews.go.com/US/mysterious-oily-substance-coats-homes-michigan-neighborhood/story?id=37004318) Accessed December 27, 2016.
- 359 25. Moreno, N.; Querol, X.; al., e. Physico-chemical characteristics of european pulverized coal
360 combustion fly ashes. *Fuel* **2005**, *84*, 1351-1363.
- 361 26. Suloway, J.J.; Roy, W.R.; Skelly, T.R.; Dickerson, D.R.; Schuller, R.M.; Griffin, R.A. *Chemical and*
362 *toxicological properties of coal fly ash*; Illinois Department of Energy and Natural Resources:
363 Illinois, **1983**.
- 364 27. <https://www.Youtube.Com/watch?V=gypsaprxve> Accessed December 27, 2016.
- 365 28. <https://www.Youtube.Com/watch?V=kjmgdewjg> Accessed December 27, 2016.
- 366 29. <https://www.Youtube.Com/watch?V=q5t4kcm5gb4> Accessed December 27, 2016.
- 367 30. <https://www.Youtube.Com/watch?V=8klu2katavq&feature=youtu.Be> Accessed December 27, 2016.
- 368 31. Cook, J.; Edwards, A.; Takeuchi, N.; Irvine-Flynn, T. Cryoconite: The dark biological secret of the
369 cryosphere. *Prog. Phys. Geog.* **2015**, 1-46.
- 370