

# 2 3 **An Indication** of Intentional Efforts to Cause Global 4 **Warming and Glacier Melting**

## 5 6 **ABSTRACT**

7  
8 **Aims:** On or about February 14, 2016, an oily-ashy substance was accidentally released by an aircraft and  
9 fell on seven residences and vehicles in Harrison Township, Michigan (USA). The aims of this  
10 investigation are to analyze the “air-drop material” and from the results obtained to draw inferences as to  
11 the intended purpose of the material.

12 **Methodology:** Inductively coupled plasma mass spectroscopy (ICP-MS) and scanning electron  
13 microscopy (SEM) with energy dispersive X-ray (EDX) analysis were used to analyze the “air-drop  
14 material.”

15 **Results:** The “air-drop material” was found to consist of an assemblage of plant material mixed with coal  
16 fly ash and salt. The splatter pattern on vehicles, ground, and rooftops resembles cryoconite holes  
17 observed on ablating glaciers worldwide. The “air-drop material” resembles to some extent natural  
18 cryoconite, and appears to be modeled after that substance with coal fly ash imparting the dark gray color  
19 that absorbs sunlight, melts glacial ice, and contributes to global warming.

20 **Conclusions:** The results of this investigation provide evidence that is strongly suggestive of a deliberate  
21 effort to hasten the melting of glaciers and thereby hasten global warming. If so, this investigation  
22 reinforces unofficial worldwide observations of daily particulate aerosol spraying in the troposphere.  
23 Elsewhere the author has provided extensive evidence that coal fly ash is the primary material being  
24 employed in such spraying whose net effect is to enhance global warming. Scientists worldwide should  
25 call for, and indeed demand, a full and open investigation into these covert geoengineering activities  
26 whose potential impacts on Earth’s climate system, the integrity of Earth’s biota, and on human health  
27 may prove to be extremely hazardous.

28  
29 *Keywords: geoengineering, global warming, cryoconite, cryoconite holes, glacier melting, Harrison*  
30 *Township*

## 31 32 33 **1. INTRODUCTION**

34  
35 Life on Earth exists in a complex and fragile state of mutually-dependent dynamic equilibrium between  
36 and among biota and the physical environment. Any perturbation of that equilibrium is apt to upset this  
37 delicate balance with potentially devastating consequences for numerous species, including humans.

38 Since the beginning of the industrial age, humans have inadvertently and materially altered our  
39 planet. Early on the effects were localized, as exemplified by the sooty and later smog conditions in cities  
40 worldwide, and by regional deforestations around the globe. As we progressed technologically our  
41 capability for environmental destruction kept growing [1]. In many cities the air is now unsafe to breathe,  
42 plastic wastes choke our oceans, airliners pollute the atmosphere with combustion products from jet fuel  
43 and its additives, land surfaces are increasingly paved over, forests continue to be eliminated, and  
44 massive fossil fuel burning produces unnatural heat and exhaust gases. This list is not exhaustive.  
45 Collectively, we humans have not yet learned to live in harmony with our planet.

46 In addition to these unintended assaults on our planet, there is an intentional one, referred to as  
47 geoengineering, which is potentially more harmful than all other assaults. Geoengineering may be defined  
48 as “the deliberate large-scale manipulation of the planetary environment including weather and climate  
49 manipulation.” The basis for geoengineering stems from cloud seeding experiments in 1946-47. It was  
50 discovered that adding dry ice (frozen CO<sub>2</sub>) or silver iodide to clouds could aid in the nucleation of rain or

51 snow. Development of the technology to control weather for use as a weapon of war began with that  
52 discovery [2,3] and has proceeded in secret ever since. From 1967 to 1972 Operation Popeye involved  
53 cloud seeding with the intention of extending the monsoon season over the Ho Chi Minh Trail to impede  
54 transport of troops and supplies during the Vietnam War [3,4]. But causing clouds to dump rain or snow  
55 more-or-less at will was just the first step. The military wanted to fully control the weather as a weapon of  
56 war, as was later described in the 1996 U.S. Air Force document: "Weather as a Force Multiplier: Owning  
57 the Weather in 2025 [5]."

58 In retrospect that document should have been cause for alarm. Since the end of World War II, the  
59 U.S. military has been single-minded in its scientific pursuits with no sense of responsibility for the  
60 wellbeing of either civilian populations or the environment. For example, in pursuit of its nuclear warfare  
61 technology, atmospheric detonations of more than one hundred nuclear devices were generally  
62 undertaken without regard for the health of unsuspecting residents downwind [6]; without regard for the  
63 environment, as evidenced by exploding a fission bomb in the Van Allen belt; and, on a more personal  
64 scale by telling pregnant women they were receiving vitamins when instead they were being given  
65 radioactive iron; or by injecting newborn infants with radioactive iodine-131 [6-9].

66 After learning how to make clouds produce rain or snow more-or-less on demand, the next  
67 technological step was to learn how to inhibit rainfall to bring drought and starvation to a perceived enemy  
68 nation. For at least thirty years experiments were conducted in the lower atmosphere (troposphere) that  
69 involved jets spraying undisclosed substances which left particulate trails across the sky [10] that were  
70 witnessed by millions (Figure 1). These trails at first superficially resemble contrails, which are ice crystals  
71 formed from aircraft exhaust. Contrails are formed, however, only in very humid environments, with  
72 temperatures low enough to sustain the saturation vapor pressure with respect to ice, and with sufficient  
73 moisture content in the exhaust gases [11,12]. Contrails rapidly become invisible by evaporation whereas  
74 particulate trails spread out to sometimes briefly form artificial cirrus-like clouds before further spreading  
75 to form a white haze in the sky.



76  
77

78 **Figure 1.** Photographs of geoengineering particulate matter emplaced in the troposphere above the  
 79 United States of America, France, England and Egypt. Typically, particulate trails laid by tanker jets soon  
 80 diffuse, becoming artificial clouds, which further diffuse into a white haze in the sky, sometimes so heavy  
 81 that the sky appears overcast, sometimes with a brownish hue. Photos courtesy of Patrick Roddie and  
 82 Deborah Whitman. Egypt photo by the author.

83

84

85 The principle involved in inhibiting rain is simple and is well known from pollution studies. Micron  
 86 and sub-micron particulate-pollution matter, when sprayed into a region where clouds form, keeps

87 moisture droplets from coalescing to form drops sufficiently heavy to fall as rain or snow. Eventually, the  
88 moisture laden clouds must release their aqueous burden potentially causing storms and downpours. The  
89 military and covert-activity implications are clear: Spray particulate matter into the air above a perceived  
90 enemy, destroy the agricultural economy, decimate livestock and cause hardship and starvation [13].

91 If tropospheric particulate spraying activities were the solely for developing that military  
92 technology, the experiments would be limited temporally and geographically. But that is not what has  
93 been observed by millions of individuals throughout the world [14-19]. In the last several years  
94 tropospheric particulate-matter spraying has become a near-daily activity over much of the world without  
95 official acknowledgement and without informed consent of those who breathe air that is contaminated  
96 with these tiny particles. Clearly, this is a secret program that is undertaken by diverse nations, including,  
97 but not limited to, the United States, Canada and other British Commonwealth nations, European Union  
98 countries, Japan, Russia, Brazil, South Korea, Egypt, and India. No official information is available to the  
99 public as to what governments/organizations are leading this aerial assault on our planet, its purpose, the  
100 substances being sprayed into the troposphere, the geophysical implications, or the public and  
101 environmental health consequences. In principle the geoscience community has the instrumentation and  
102 understanding to ascertain answers to some of these questions. Instead, academic scientists collectively  
103 have turned a blind eye, remaining silent or chanting the United Nations' Intergovernmental Panel on  
104 Climate Change (IPCC) mantra that at some time in the future it may be necessary to put solar-blocking  
105 substances high into the stratosphere to counteract assumed global warming. Recently, a once  
106 prestigious scientific journal became party to deliberately deceiving the public about this aerial spraying  
107 [20].

108 I hold that scientists, because of their abilities and training, have the responsibility to benefit  
109 mankind and advance civilization [21]. I therefore chose to apply scientific methods to ascertain the  
110 nature of the main substance being sprayed into the troposphere [13,22,23] and discovered three  
111 independent lines of evidence that the tropospheric geoengineering particulate-pollution consists mainly  
112 of coal combustion fly ash. When coal is burned by electric-power utilities, the heavy ash settles and the  
113 "fly ash" goes up the smokestacks where in Western nations it is electrostatically trapped and  
114 sequestered as this ash-portion contains most of the toxic heavy metals that were incorporated in the  
115 coal. When sprayed into the troposphere, coal fly ash inhibits rain/snow fall, absorbs atmospheric  
116 moisture, enhances the electrical conductivity of atmospheric moisture, warms the atmosphere, and  
117 blocks radiation from the surface into space. When the coal fly ash with its typically dark gray color settles  
118 to Earth, it absorbs sunlight and changes the albedo of snow and ice which aids in its melting. In other  
119 words, in addition to causing drought, when sprayed into the troposphere on a near-global, near-daily  
120 basis as at present, the aerosolized coal fly ash warms the planet, causing deliberate anthropogenic  
121 global warming of a different type than caused by greenhouse gases.

122 Jet aircraft that spray coal fly ash into the troposphere are part of a near-global covert program  
123 and operate from undisclosed airbases. On or about February 14, 2016, an aircraft presumably operating  
124 out of Selfridge Air National Guard Base in Michigan (USA) momentarily released a small portion of its  
125 payload which reportedly fell on residential properties in Harrison Township, Michigan (USA). On  
126 February 14, 2016, a resident of Harrison Township noticed a strange substance that had apparently  
127 fallen from a passing aircraft and that had landed on at least seven homes and several vehicles (Figure  
128 2). "It was an ash type of substance with a little bit of an oily consistency to it," Harrison Township Fire  
129 Department Chief Michael Lopez told ABC News [24]. "It appears to have fallen straight down," he added,  
130 noting that the substance was only found on the roofs of cars and homes, and not splattered across the  
131 sides.

132 Suspecting that this was an accidental release from a covert geoengineering activity, I obtained  
133 samples of the material from one of the residents whose property was splattered from above (Figure 2)  
134 and had the material analyzed. The material was also sampled and analyzed by officials from the  
135 Michigan Department of Environmental Quality. Here I report the results of those analyses, which provide  
136 evidence of a deliberate operation to melt ice and snow, which is consistent with the hypothesis that  
137 aerosolized coal fly ash is being used to deliberately enhance global warming [13,22,23].





139  
140  
141 **Figure 2** Splatter pattern of air-drop material evident on vehicles and residences.  
142

143 **2. METHODOLOGY**  
144

145 Samples of the “air-drop material” were collected by Harrison Township, Michigan (USA) resident Paul  
146 Schlutow on his property. He generously donated sample material to the author for analyses. Aliquots of  
147 the material were sent to Northern Lake Service, Inc.’s Analytical Laboratory and Environmental Services  
148 and to Basic Laboratory, Inc. for Inductively Coupled Plasma Mass Spectroscopy (ICP-MS) Analyses. An  
149 aliquot was sent to RJ Lee Group, Inc. for scanning electron microscopy (SEM) with energy dispersive X-  
150 ray (EDX) analysis.

151 **3. RESULTS AND DISCUSSION**  
152

153 Figure 3 shows low magnification images of the air-drop material which the Michigan Department of  
154 Environmental Quality noted from microscopic examination “... consists of a mixture of particles in dark  
155 clumps ... that morphologically resembles plant material, including leaves, seeds and fruit skins make up  
156 the majority of the sample....” Clearly, the air-drop material is not mainly coal combustion fly ash, but, as

157 evidence indicates, coal fly ash is a commonly used geoenvironmental material. When coal fly ash falls to  
158 Earth, its typically dark gray color absorbs sunlight and enhances global warming. So the question  
159 naturally arose as to whether dark gray colored air-drop material contains coal fly ash. To answer this  
160 question three samples of air-drop material were analyzed independently by ICP-MS, including one  
161 sample of which was collected and analyzed by the Michigan Department of Environmental Quality. The  
162 ICP-MS data, expressed as elemental mass ratios, are compared in Figure 4 to corresponding mass  
163 ratios for the ranges of published coal fly ash analyses of 23 European coal fly ash samples [25] and 12  
164 American coal fly ash samples [26]. For further comparison, ICP-MS ratio data also are shown for four  
165 samples of dust collected on high-efficiency air filters operated outdoors for three months in California  
166 (USA) and Arizona (USA) in places far removed from industrial coal-burning facilities [13,23]. ICP-MS  
167 data, expressed as mass ratios, are also shown for five fiber samples collected in Laona, Wisconsin  
168 (USA) on grass after snow had melted (Figure 5). White fibrous material, sometimes observed falling to  
169 Earth during tropospheric aerosol spraying or found afterward [27-30] is believed to be an unintended by-  
170 product formed when the coal fly ash feed-material with its additives encounters the jet combustion  
171 environment where melting and elongation occur.

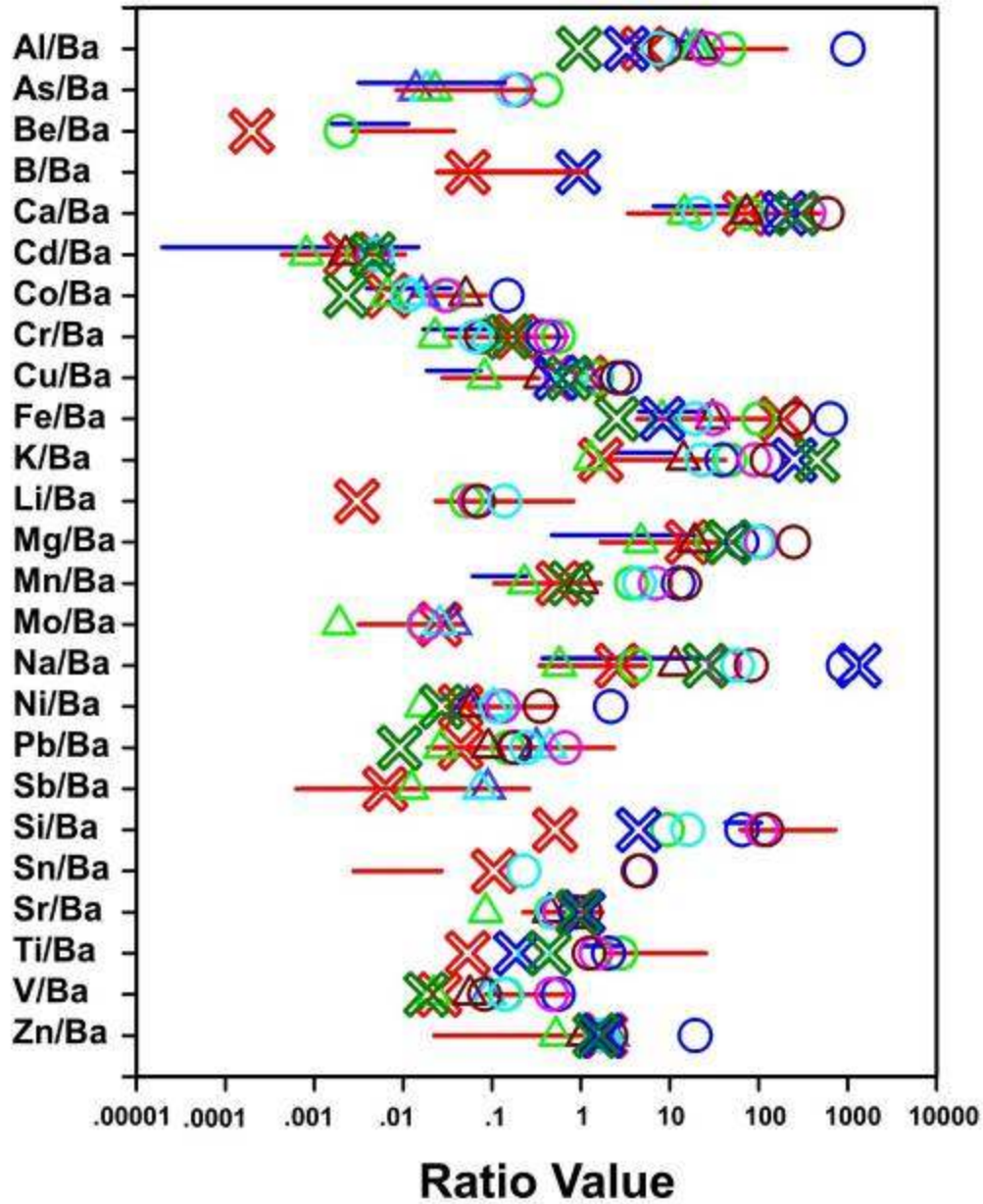
172  
173



174

175  
176  
177  
178

**Figure 3** Low magnification images of air-drop material.



179  
180  
181  
182  
183  
184  
185  
186  
187

**Figure 4** Element-ratios determined for air-drop material samples are indicated by X's: Green by the Michigan Department of Environmental Quality, red by Northern Lake Service, and blue by Basic Laboratory. For comparison: Red lines and blue lines, respectively, are the measured element-ratio ranges of European [25] and American [26] coal fly ash samples, circles are element-ratios of samples of fibers (Figure 5) found on grass as snow melted in Laona, Wisconsin (USA) on March 19, 2015, and triangles are element-ratios determined on dust collected on high-efficiency air filters operated outdoors for three month periods [13,23].





188  
189  
190  
191  
192  
193  
194  
195  
196  
197

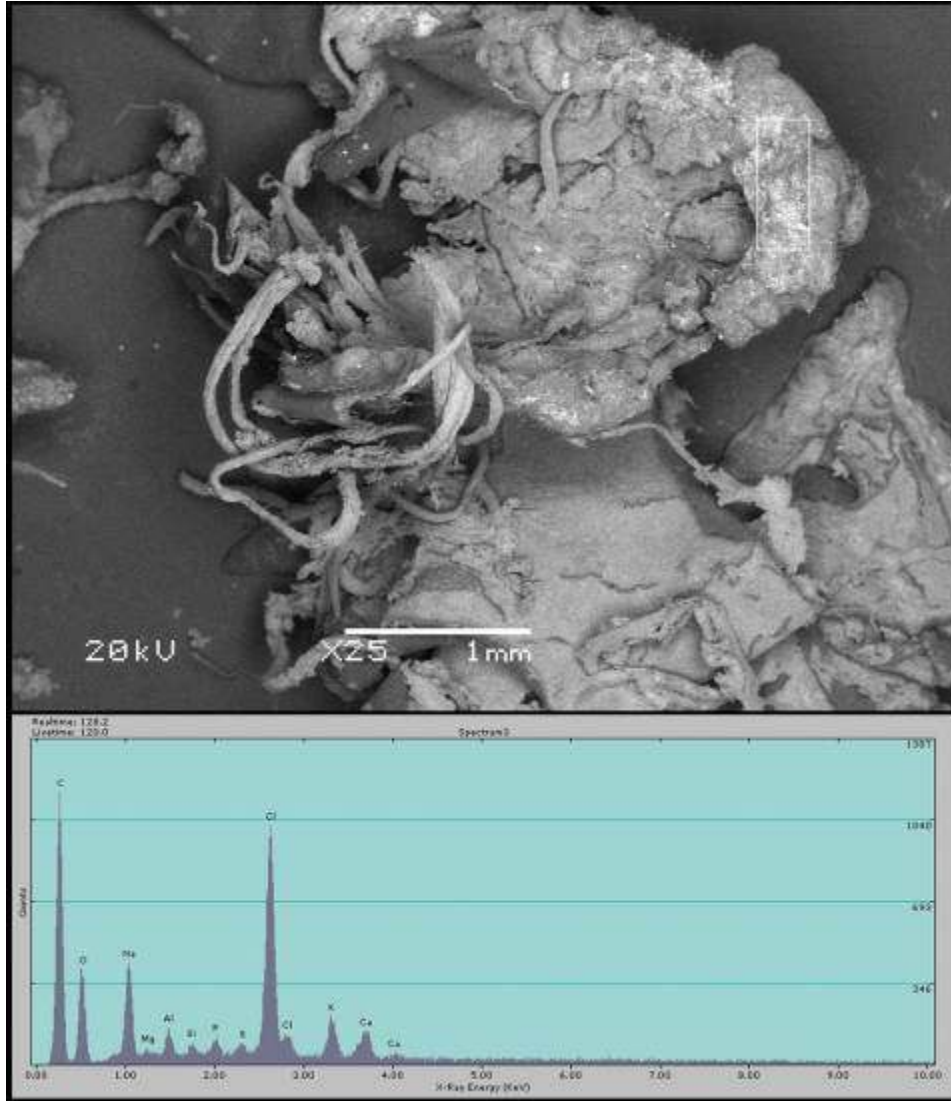
**Figure 5** Fibers believed to be formed during tropospheric geoengineering. Upper: Fibers observed on grass as snow melted and sampled for analyses (photo courtesy of Robert West). Lower: Typical presentation of fibers, in this case caught on farm equipment in the village of Argujillo in the Castilla – León region of Spain (photo courtesy of Guardacielos – Skyguards).

Nothing should be inferred from the observation in Figure 4 that not all ratios are shown for each measured sample; that is primarily the consequence of different requested analyses, and secondarily the result of different detection limits of the laboratories involved. Among the results shown there is variation,

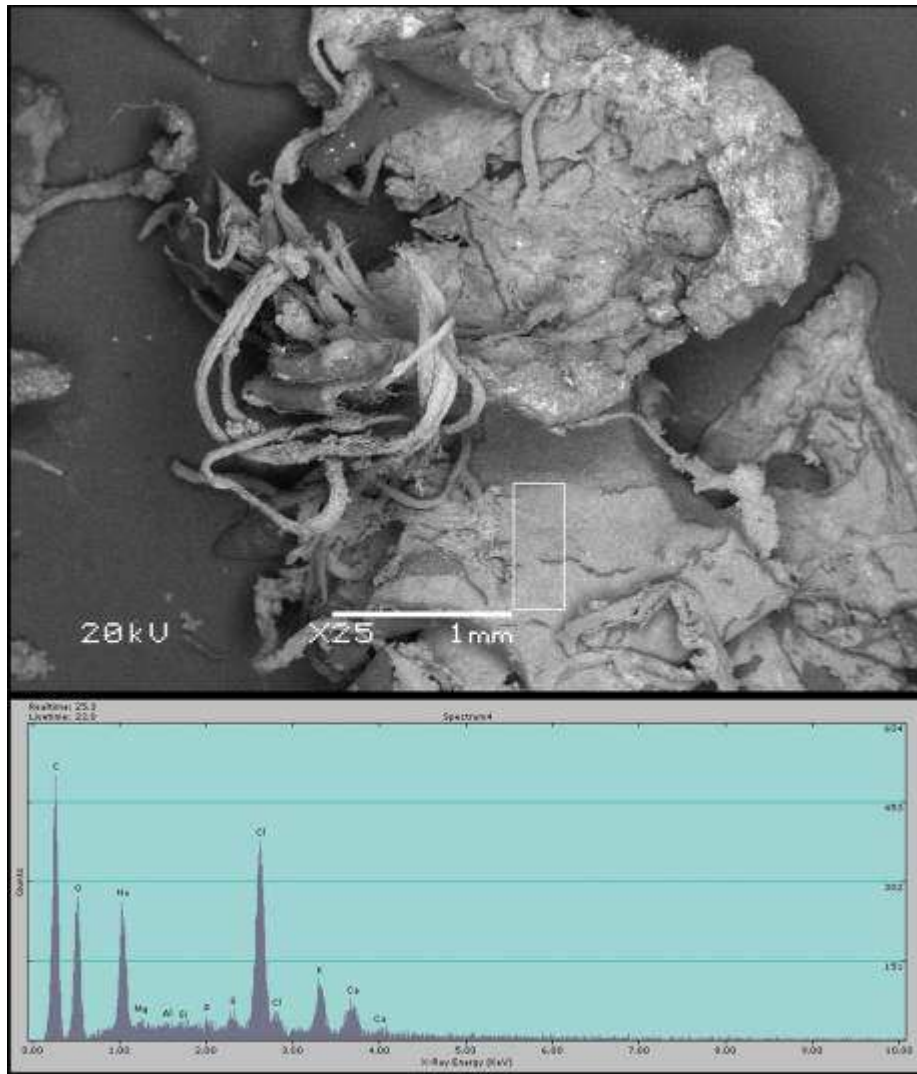


198 but that is to be expected. Elemental variations are expected as coal from different sources occludes  
199 different relative amounts of trace elements. Elemental variations in coal fly ash may also arise from  
200 different coal-burner dynamics. Further, elemental variations, at least in the fiber data, may arise from the  
201 unintended fiber production mechanism. Statistical treatment of the measured ratio comparisons is not  
202 appropriate as the comparison is not being made to one single related data population, but to a group of  
203 independent sets of potentially variable populations. Nevertheless, the preponderance of agreements  
204 over a large number of element ratios is strong evidence that coal fly ash is a component of the air-drop  
205 material as well as of the filter-dust and fibers.

206 Figures 6-8 are scanning electron microscope (SEM) images of a sample of air-drop material.  
207 The white rectangle shown on each image calls out the area where the EDX spectrum was determined.  
208 The numerical values of the measured elements are collected in Table 1.

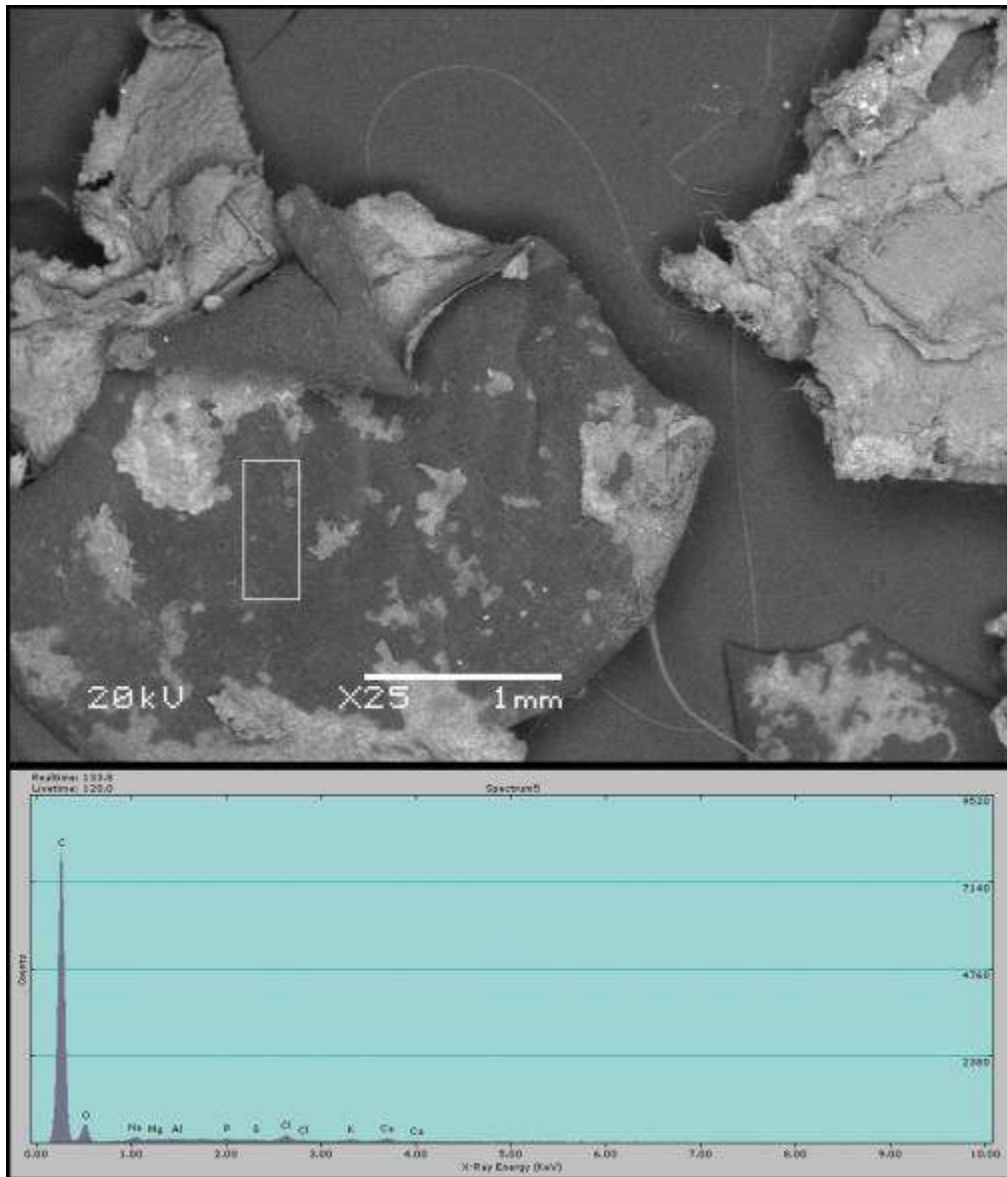


209  
210  
211 **Figure 6.** SEM photograph of a sample of air-drop material. The white rectangle calls out the area where  
212 the EDX spectrum was determined. Numerical EDX values are collected in Table 1.  
213



214  
 215  
 216  
 217  
 218  
 219  
 220  
 221  
 222

**Figure 7.** SEM photograph of the same sample of air-drop material shown in Figure 6. The white rectangle calls out a different area where the EDX spectrum was determined. Numerical EDX values are collected in Table 1.



223  
 224  
 225  
 226  
 227  
 228  
 229  
 230  
 231  
 232  
 233  
 234  
 235  
 236  
 237  
 238

**Figure 8.** SEM photograph of a different sample of air-drop material. The white rectangle calls out the area where the EDX spectrum was determined. Numerical EDX values are collected in Table 1.

239  
240

**Table 1.** Collected EDX elemental composition for the areas selected in Figures 6-8.

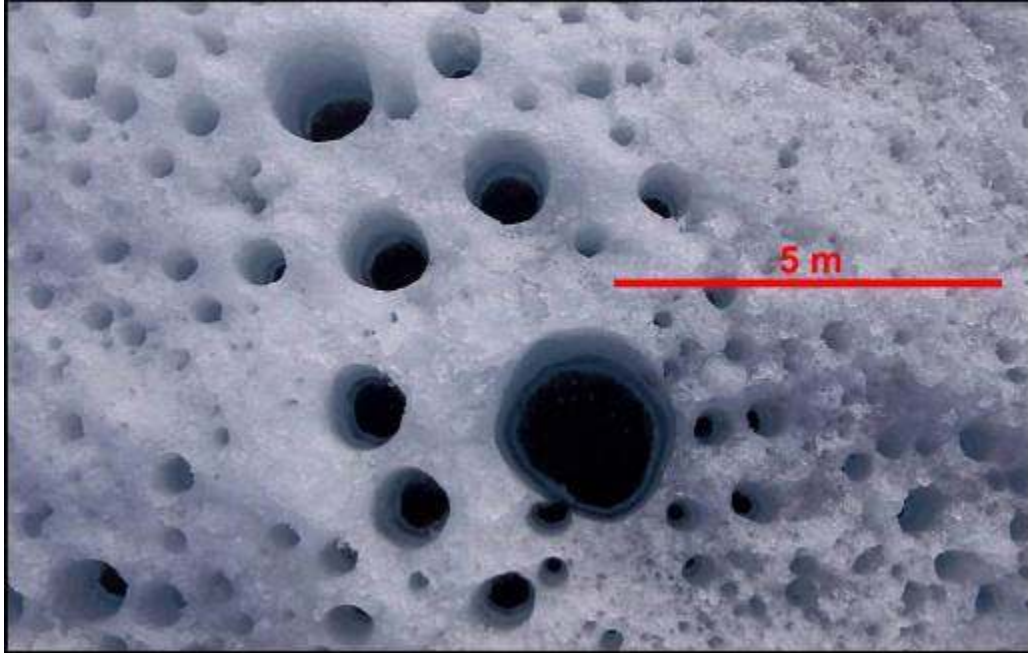
Element	Figure 4		Figure 5		Figure 6	
	wt. %	atom %	wt. %	atom %	wt. %	atom %
<b>C</b>	52.21	67.02	46.83	60.53	91.68	94.22
<b>O</b>	19.64	18.93	26.08	25.31	6.64	5.12
<b>Na</b>	7.85	5.27	9.93	6.71	0.40	0.22
<b>Mg</b>	0.11	0.07	0.58	0.37	0.04	0.02
<b>Al</b>	0.69	0.39	0.00	0.00	0.01	0.00
<b>Si</b>	0.08	0.05	0.17	0.10	0.03	0.01
<b>P</b>	0.56	0.28	0.06	0.03	0.09	0.03
<b>S</b>	0.48	0.23	0.75	0.36	0.01	0.00
<b>Cl</b>	13.26	5.77	10.24	4.48	0.51	0.18
<b>K</b>	2.87	1.13	3.17	1.26	0.22	0.07
<b>Ca</b>	2.25	0.87	2.19	0.85	0.38	0.12
<b>Total</b>	<b>100.00</b>		<b>100.00</b>		<b>100.00</b>	

241  
242  
243  
244  
245  
246  
247  
248  
249  
250  
251  
252  
253  
254  
255  
256  
257  
258  
259

From inspection of the data shown in Figures 6-8 and Table 1, it is clear that the air-drop material consists of processed plant material with the addition of some coal fly ash and some salt, which is indicated by the sodium and chlorine values shown in Table 1. Regrettably, no attempts were made to ascertain the nature of the oily binder originally observed on freshly fallen samples or to determine whether there were initially any viable living organisms present. Within the context of the data presented here, and the observed distribution pattern of air-drop material (Figure 2), what is the purpose of the air-drop material that was accidentally released over Harrison Township on or about February 14, 2016?

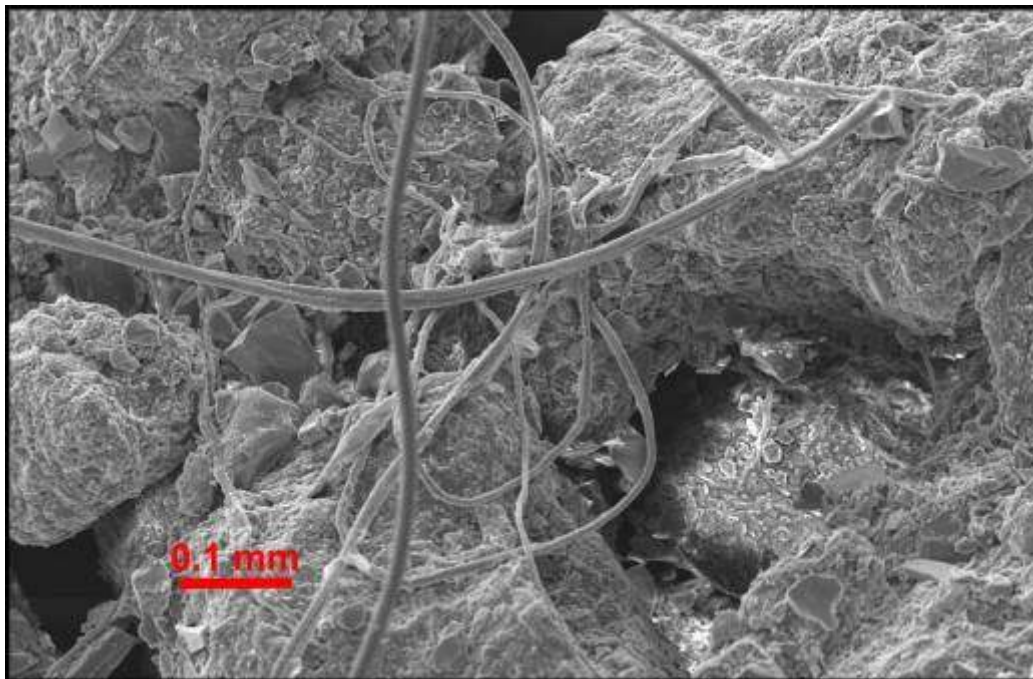
Patterns of quasi-circular holes, sometimes called “cryoconite holes” are observed on ablating glacier surfaces worldwide (Figure 9); these holes resemble the distribution pattern of the air-drop material shown in Figure 2. According to Cook et al. [31], “Cryoconite is granular sediment found on glacier surfaces comprising both mineral and biological material. Due to its dark colour, cryoconite efficiently absorbs solar radiation and ‘drills’ quasi-circular holes up to tens of centimetres deep into glacier ice surface.” Figure 10 is a SEM image of cryoconite. Despite its being ten times higher in magnification, the Figure 10 cryoconite image resembles the air-drop material SEM image shown in Figure 6. The air-drop material, I posit, is synthetic cryoconite, or proto-cryoconite, whose purpose is to melt glacial ice. That explanation is consistent with the spraying of coal fly ash into the troposphere to cause global warming.





260  
261  
262  
263  
264  
265

**Figure 9** Cryoconite holes on the Greenland ice sheet (photo courtesy of Joseph Cook).



266  
267  
268  
269  
270  
271  
272

**Figure 10** SEM image of cryoconite from the Greenland Ice Sheet showing a network of cyanobacterial filaments binding mineral fragments (photo courtesy of Joseph Cook).

For at least fifteen years covert weather/climate modification activities have been taking place with ever-increasing scale and frequency that involve spraying pollutant particles into the troposphere.

273 The scientific community has been grossly remiss in ignoring the now near-daily, near-global spraying of  
274 particulate-pollution matter into the troposphere which evidence indicates is coal fly ash, a substance  
275 containing toxins injurious to virtually all biota, including humans. Not only does the spraying contaminate  
276 the environment, but the aerial placement of this particulate-pollution causes global warming and alters  
277 weather patterns which can cause damage or injury to human health and even loss of life, disrupt food  
278 production, and create a pestilent-ridden unhealthy environment on a global scale. Yet the consequences  
279 of this near-global weather/climate modification geoengineering activity have not been taken into account  
280 by any of the climate change models evaluated by the United Nations' Intergovernmental Panel on  
281 Climate Change (IPCC), a fact that calls into question not only the findings of that organization, but its  
282 moral authority as well.

283 Based upon the evidence presented here, I posit, there is another covert geoengineering activity  
284 being practiced whose purpose appears to be to further enhance global warming by melting glacial ice.  
285 The coal fly ash component of the air-drop material further pollutes the environment with toxic heavy  
286 metals.

#### 287 **4. CONCLUSIONS**

289 The results of this investigation provide evidence that is strongly suggestive of a deliberate effort to  
290 hasten the melting of glaciers and thereby, hasten global warming. If so, this investigation reinforces  
291 worldwide observations of daily aerosol particulate spraying in the troposphere. Elsewhere the author has  
292 provided extensive evidence that coal fly ash is the primary material being employed in such spraying  
293 whose net effect is to enhance global warming. **Scientists worldwide who study glaciers should be mindful  
294 of the evidence presented here and look for instances where such matter might have been dropped.**

295 Scientists worldwide should call for, and indeed demand, a full and open investigation into these  
296 covert geoengineering activities whose potential impacts on Earth's climate system, the integrity of  
297 Earth's biota, and on human health may prove to be extremely hazardous.

#### 299 **CONSENT NOT APPLICABLE**

#### 303 **ETHICAL APPROVAL NOT APPLICABLE**

#### 305 **REFERENCES**

- 307 1. McNeill, J.R. *Something new under the sun: An environmental history of the twentieth-century*  
308 *world*. W, W, Norton: New York, **2000**.
- 309 2. Bertell, R. *Planet earth, the latest weapon of war: A critical study into the military and the*  
310 *environment*. The Women's Press: London, **2000**.
- 311 3. Fleming, J.R. *Fixing the sky: The checkered history of weathe and climate control*. Columbia  
312 University Press: New York, **2010**.
- 313 4. NYTNS. Rainmaking used as weapon of war in se asia. *Daytona Beach Morning Journal* May 19,  
314 **1974**.
- 315 5. House, T.J.; Near, J.B.; Shields, W.B.; Celentano, R.J.; Husband, D.M.; Mercer, A.E.; Pugh, J.E.  
316 Weather as a force multiplier: Owning the weather in 2025. *US Air Force* **1996**.
- 317 6. Goliszek, A. *In the name of science: A history of secret programs, medical research, and human*  
318 *experimentation*. St. Martin's Press: New York, **2003**.
- 319 7. Cole, L.A. *Clouds of secrecy: The army's germ warfare tests over populated areas*. Rowman &  
320 Littlefield Publishers, Inc.: Oxford, **1988**.
- 321 8. Hornblum, A.M.; Newman, J.L.; Dober, G.J. *Against their will: The secret history of medical*  
322 *experimentation on children in cold war america* Palgrave Macmillan: New York, **2013**.
- 323 9. Loue, S. *Textbook of research ethics: Theory and practice*. Springer: US, **2000**.
- 324 10. Thomas, W. *Chemtrails confirmed*. Bridger House Publishers: Carson City, Nevada (USA), **2004**.

- 325 11. Jiusto, J.E. *Prediction of aircraft condensation trails, project contrails*; Cornell Aeronautical  
326 Laboratory Report No. VC-1055-P-5: **1961**; p 26.
- 327 12. Schumann, U. On conditions for contrail formation from aircraft exhausts. *Meteorologisch*  
328 *Zeitschrift* **1996**, N.F.5, 4-23.
- 329 13. Herndon, J.M. Adverse agricultural consequences of weather modification. *AGRIVITA Journal of*  
330 *agricultural science* **2016**, 38, 213-221.
- 331 14. <http://globalskywatch.com> Accessed December 27, 2016.
- 332 15. <http://www.Cielvoile.Fr> Accessed December 27, 2016.
- 333 16. <http://www.Geoengineeringwatch.org> Accessed December 27, 2016.
- 334 17. <http://socalskywatch.net> Accessed December 27, 2016.
- 335 18. <http://www.Tankerenemy.com> Accessed December 27, 2016.
- 336 19. <http://www.Guardacielos.org> Accessed December 27, 2016.
- 337 20. Shearer, C.; West, M.; Caldeira, K.; Davis, S.J. Quantifying expert consensus against the existence  
338 of a secret large-scale atmospheric spraying program. *Environ. Res. Lett.* **2016**, 084011.
- 339 21. Herndon, J.M. Some reflections on science and discovery. *Curr. Sci.* **2015**, 108, 1967-1968.
- 340 22. Herndon, J.M. Aluminum poisoning of humanity and earth's biota by clandestine geoengineering  
341 activity: Implications for india. *Curr. Sci.* **2015**, 108, 2173-2177.
- 342 23. Herndon, J.M. Obtaining evidence of coal fly ash content in weather modification  
343 (geoengineering) through analyses of post-aerosol spraying rainwater and solid substances. *Ind.*  
344 *J. Sci. Res. and Tech.* **2016**, 4, 30-36.
- 345 24. [http://abcnews.go.com/US/mysterious-oily-substance-coats-homes-michigan-](http://abcnews.go.com/US/mysterious-oily-substance-coats-homes-michigan-neighborhood/story?id=37004318)  
346 [neighborhood/story?id=37004318](http://abcnews.go.com/US/mysterious-oily-substance-coats-homes-michigan-neighborhood/story?id=37004318) Accessed December 27, 2016.
- 347 25. Moreno, N.; Querol, X.; al., e. Physico-chemical characteristics of european pulverized coal  
348 combustion fly ashes. *Fuel* **2005**, 84, 1351-1363.
- 349 26. Suloway, J.J.; Roy, W.R.; Skelly, T.R.; Dickerson, D.R.; Schuller, R.M.; Griffin, R.A. *Chemical and*  
350 *toxicological properties of coal fly ash*; Illinois Department of Energy and Natural Resources:  
351 Illinois, **1983**.
- 352 27. <https://www.Youtube.Com/watch?V=gpyapxrye> Accessed December 27, 2016.
- 353 28. <https://www.Youtube.Com/watch?V=kjmgdewwjq> Accessed December 27, 2016.
- 354 29. <https://www.Youtube.Com/watch?V=g5t4kcm5gb4> Accessed December 27, 2016.
- 355 30. <https://www.Youtube.Com/watch?V=8klu2katavq&feature=youtu.Be> Accessed December 27, 2016.
- 356 31. Cook, J.; Edwards, A.; Takeuchi, N.; Irvine-Flynn, T. Cryoconite: The dark biological secret of the  
357 cryosphere. *Prog. Phys. Geog.* **2015**, 1-46.
- 358